

Hair Color Chart - Envy Wigs



Disclaimer:

- Only certain colors are available for each item.
- You can view the available colors for each item under **Color Choice**.
- On screen color accuracy may vary depending on your monitor's gamut.

Envy Color Chart



Black
1B



Dark Brown
4/6 Mix - Rich coffee color



Medium Brown
10 - Medium brown with natural highlights



Light Brown
12 - Light Golden brown with highlights



Mocha Frost
Light brown with golden blonde blend



Chocolate Caramel
Medium brown with soft red and blonde highlights



Amaretto N Cream
Dark brown at roots-overall medium brown highlighted with honey blonde



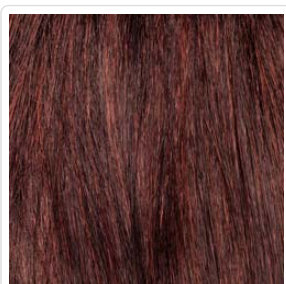
Golden Nutmeg
Medium brown at roots-overall warm cinnamon with golden blonde highlights



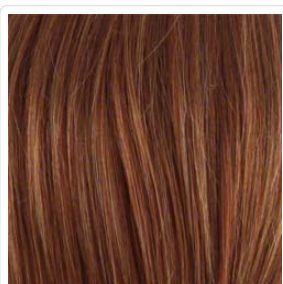
Sparkling_Champagne
Medium brown at roots-overall strawberry blonde highlighted with soft golden blonde



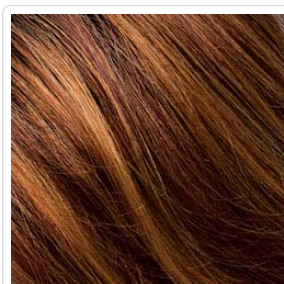
Toasted Sesame
Medium brown at roots-overall light brown highlighted with wheat blonde



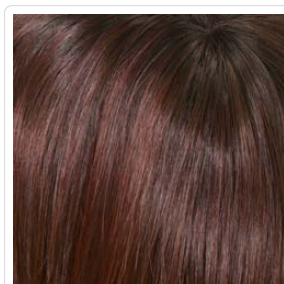
Dark Red
33 with 32 highlights - Auburn with brighter red highlights



Lighter Red
Irish red with subtle blonde highlights



Cinnamon Raisin
Medium brown with auburn and cinnamon highlights



Chocolate Cherry
Dark brown at roots-overall medium brown with deep red highlights



Creamed Coffee
 Medium brown at roots-overall medium brown w/cinnamon & golden blonde highlights



Ginger Cream
 Dark beige blonde underneath highlighted on top with light beige blonde



Dark Blonde
 2 Toned blend of soft dark honey blonde with highlights



Medium Blonde
 26 & 23 Blend - Soft golden blonde with champagne blonde highlights



Light Blonde
 2 Toned blend of creamy blonde with champagne highlights



Frosted
 24/18T - Light brown & wheat blonde blend at roots tipped with wheat blonde



Almond Breeze
 Light brown with ash blonde blend



Vanilla Butter
 Golden blonde with champagne blonde blend



Dark Grey
 38 - Medium to light brown with 40% gray



Medium Grey
 56 - Salt & pepper gray 50% medium brown 50% gray



Light Grey
 60 - Pure white gray